



Fastening Pins

Steel fastening pins & Cobber pin gun

Description

Recycled steel fastening pins to secure erosion-control geotextiles, irrigation lines and fencing to the ground.

Variety of sizes and gauges are available.

Applications

- Fixing geotextiles and weed matting
- Irrigation pipe securing pins
- Bird netting, sediment and windbreak materials.
- Securing sediment control products.

Benefits

RECYCLED STEEL

All pins are manufactured from 100% recycled steel.

SHARP POINTED ENDS

All steel fastening pins have sharp pointed ends for easy penetration through the geotextiles and compacted soil.

FLAT BRIDGE

The flat top on the pins helps prevent textile tearing and makes them easy to hammer into place. Rounded bridges can be supplied for securing irrigation lines.

ROUNDED PINS

Rounded bridges are available, used for securing irrigation lines.





Fastening Pins

Steel fastening pins & Cobber pin gun

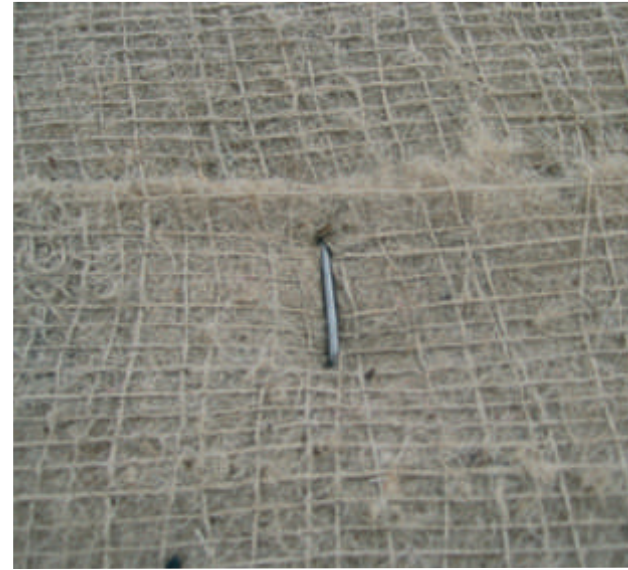
Specifications

Name	Fastening Pins	
Material	100% recycled hard drawn bright steel	
NON GALVANISED		
Sizes (mm) (leg x bridge x leg)	Wire Diam. (mm)	Uses
100 x 30 x 100	3.15	low gradient slopes, or firm soils
150 x 30 x 150	4mm	moderate slopes and firm soils
200 x 30 x 200	4mm	moderate to steep slopes & compacted soils
300 x 30 x 300	4mm	very loose soils, flood zones & sand dunes
Cobber Pin gun		
150 x 33 x 150	2.5mm	moderate slopes and firm soils
200 x 33 x 200	2.5mm	moderate to steep slopes & compacted soils

Other pin sizes available on request.

GALVANISED

All pins above are available in galvanised steel.



Cobber Pin Gun

After years of research and continuous field testing, Geofabrics Australasia has secured the most advanced equipment for fastening erosion control materials.

The Mark II Cobber Pin Gun is constructed of the lightest weight structural materials which include an aluminium body, stainless steel drive shaft and for low maintenance the COBBER Pin Gun has monomer cast bearings.

The Cobber Pin Gun has a quick release opening carriage for easy site inspection and site maintenance if necessary.

The Cobber Pin Gun has been designed for excellent performance on sites up to 45 degrees gradient. To accommodate this the handle is fully adjustable and can rotate 90 degrees. It also has built in magnetic staple counter to easily track site performance.

The pins for the Cobber Pin Gun are available nationally in various pin sizes.



Specifier's tip

- Ensure pin length is long enough to penetrate into sub-soil.